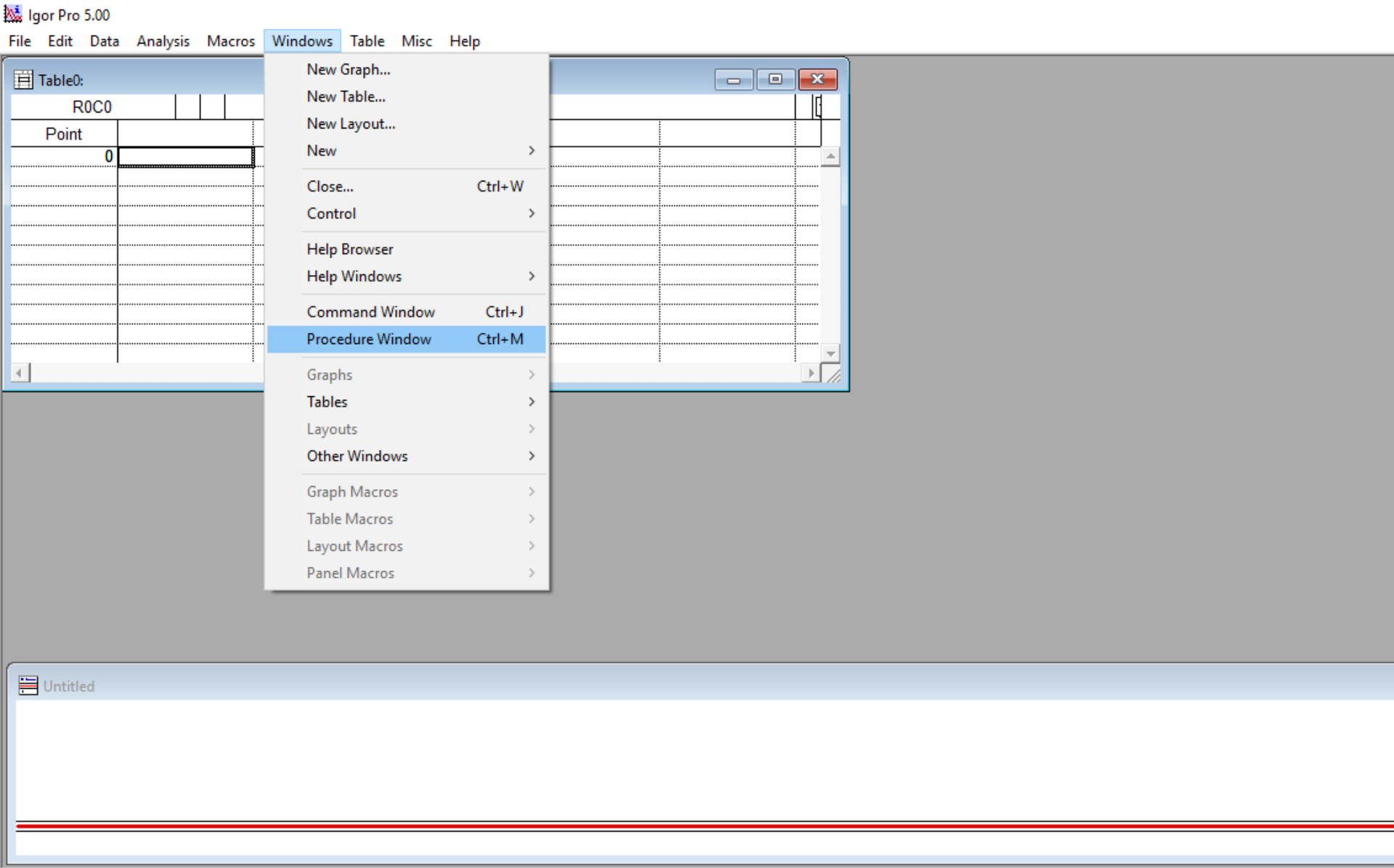
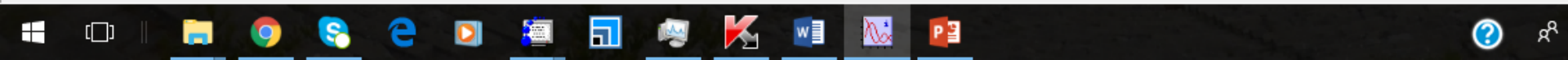


# Open the Procedure Window



Makes the built-in procedure window the active window.



# Copy the text of a desired Function

Igor Pro 5.00

File Edit Data Analysis Macros Windows Procedure Misc Help

Procedure

```
#pragma rtGlobals=1 // Use modern global access method.
```

two\_gauss - Notepad

File Edit Format View Help

```
Function g2peak(w,x)  
Wave w; Variable x
```

```
Variable a0,a1,x0,x1,sig0,sig1  
Variable g1,g2
```

```
a0 = w[0]  
x0 = w[1]  
sig0 = w[2]  
a1 = w[3]  
x1 = w[4]  
sig1 = w[5]  
g1 = (a0)/(sqrt(2.*3.14159)*sig0)*exp(-(x-x0)^2/(2*sig0^2))  
g2 = (a1)/(sqrt(2.*3.14159)*sig1)*exp(-(x-x1)^2/(2*sig1^2))  
return g1+g2
```

```
End
```

Templates Procedures

Untitled

Ready



# Paste the text of the desired Function in the Window

Igor Pro 5.00

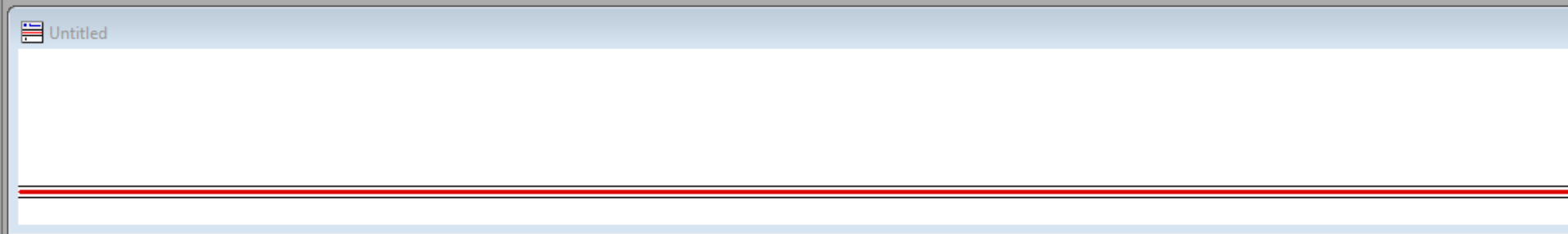
File Edit Data Analysis Macros Windows Procedure Misc Help

```
Procedure
#pragma rtGlobals=1 // Use modern global access method.

Function g2peak(w,x)
Wave w; Variable x

Variable a0,a1,x0,x1,sig0,sig1
Variable g1,g2

a0 = w[0]
x0 = w[1]
sig0 = w[2]
a1 = w[3]
x1 = w[4]
sig1 = w[5]
g1 = (a0)/(sqrt(2.*3.14159)*sig0)*exp(-(x-x0)^2/(2*sig0^2))
g2 = (a1)/(sqrt(2.*3.14159)*sig1)*exp(-(x-x1)^2/(2*sig1^2))
return g1+g2
End
```



Ready









