

What is the composition?

a. $x_2 = 0.40$, $y_2 = 0.60$

$$P_1^* = 22 \text{ Torr}$$

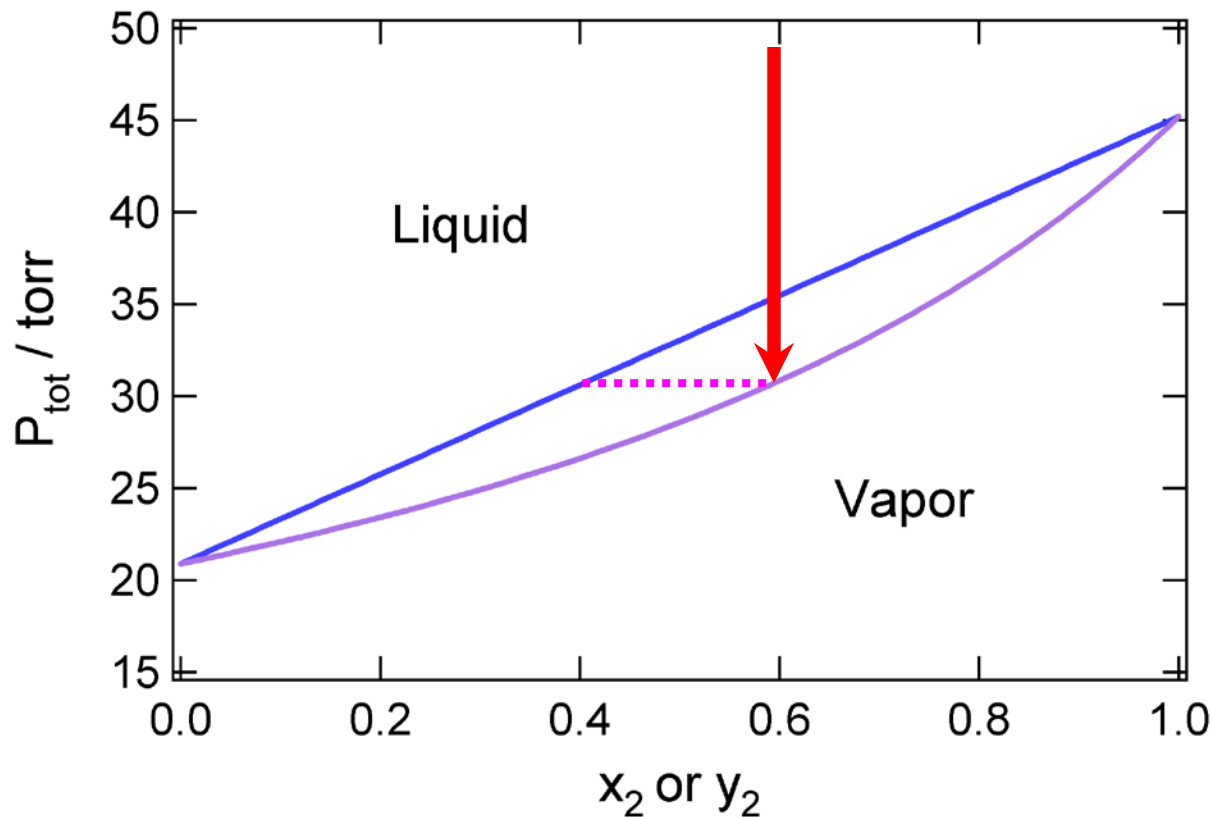
b. $x_2 = 0.50$, $y_2 = 0.70$

$$P_2^* = 45 \text{ Torr}$$

c. $x_2 = 0.50$, $y_2 = 0.50$

$$P_{tot} = 31 \text{ Torr}$$

d. $x_2 = 0.40$, $y_2 = 0.70$



What is the composition?

a. $x_2 = 0.40$, $y_2 = 0.60$

b. $x_2 = 0.50$, $y_2 = 0.70$

c. $x_2 = 0.50$, $y_2 = 0.50$

d. $x_2 = 0.40$, $y_2 = 0.70$

