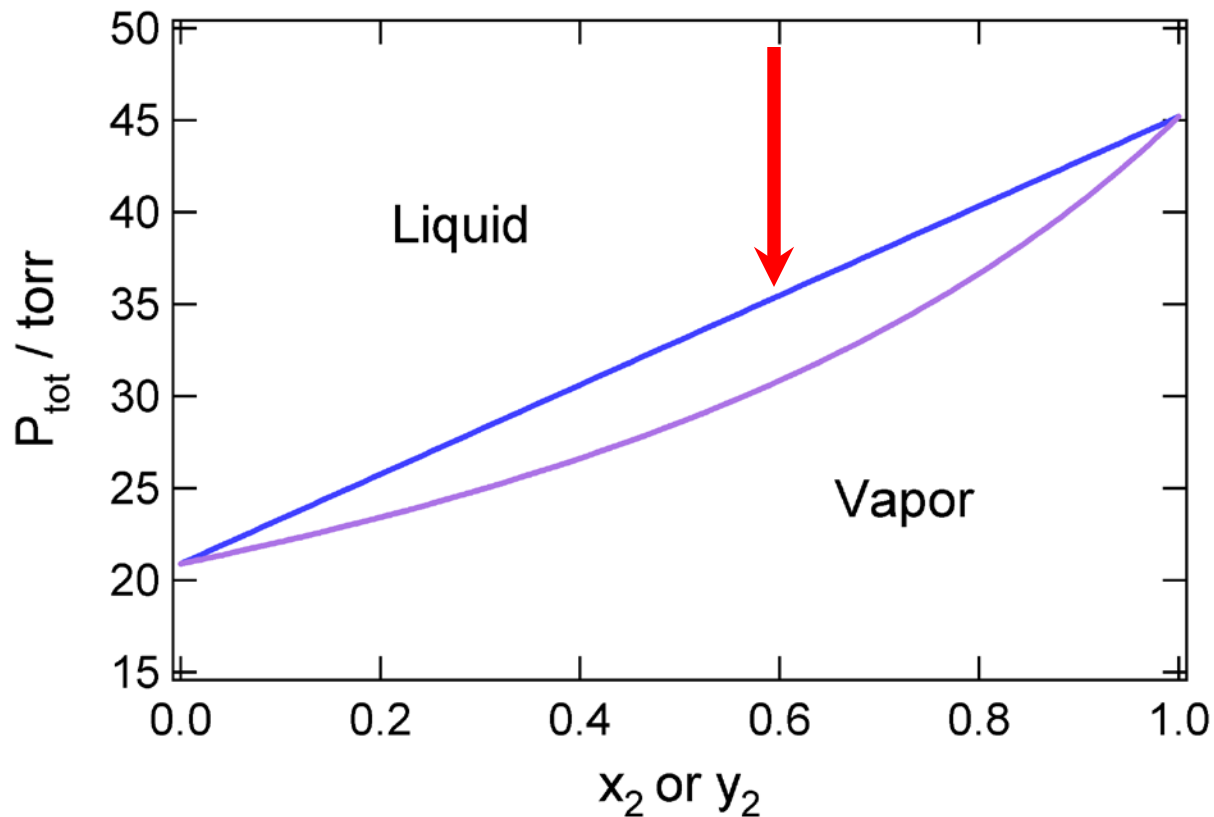


What is the composition of the vapor?

- a. $y_2 = 0.60$
- b. $y_2 = 0.48$
- c. $y_2 = 0.78$
- d. $y_2 = 0.98$

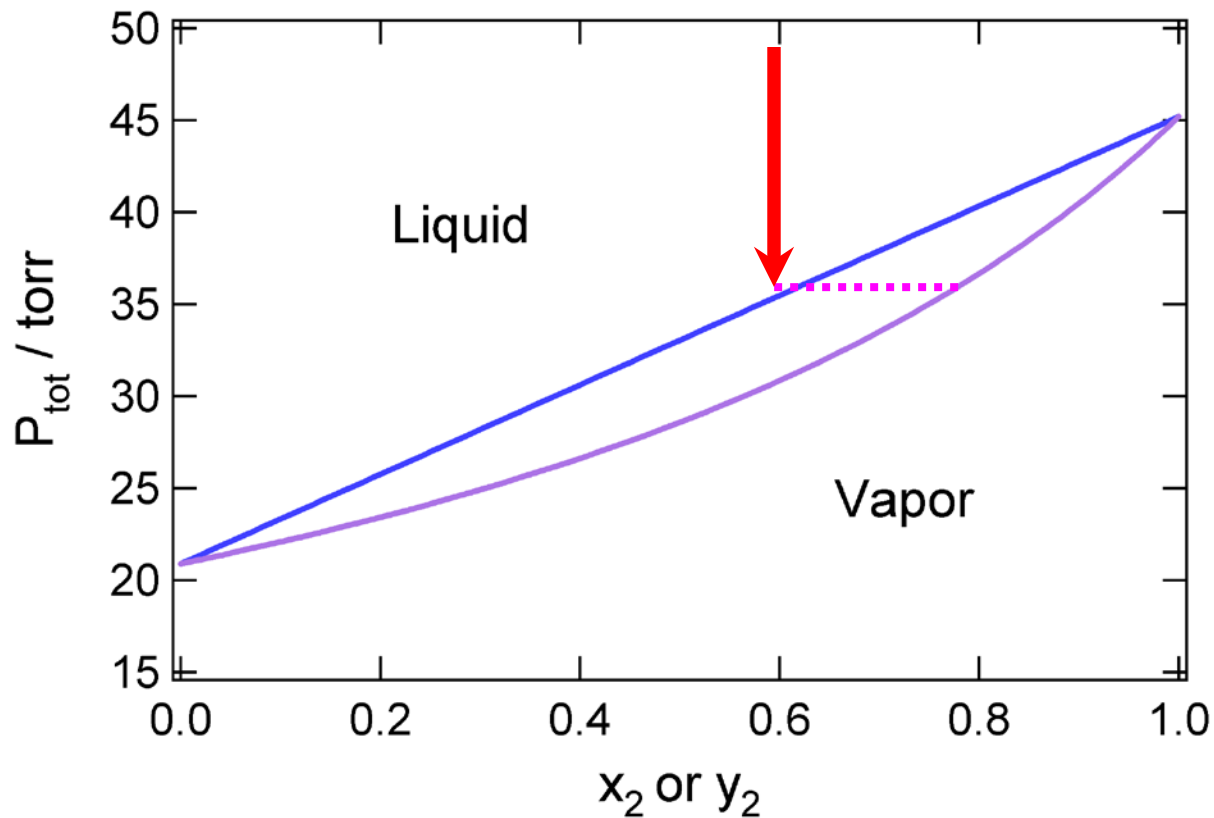
$$P_1^* = 22 \text{ Torr}$$

$$P_2^* = 45 \text{ Torr}$$



What is the composition of the vapor?

- a. $y_2 = 0.60$
- b. $y_2 = 0.48$
- c. $y_2 = 0.78$
- d. $y_2 = 0.98$



What is the composition of the vapor?

- a. $y_2 = 0.60$
- b. $y_2 = 0.48$
- c. $y_2 = 0.78$
- d. $y_2 = 0.98$

